

Chapter 16 Editing Features and Attributes

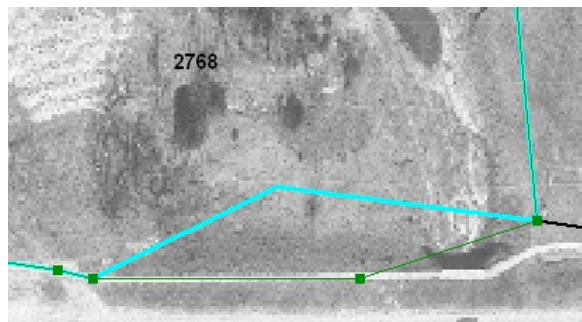
16 A



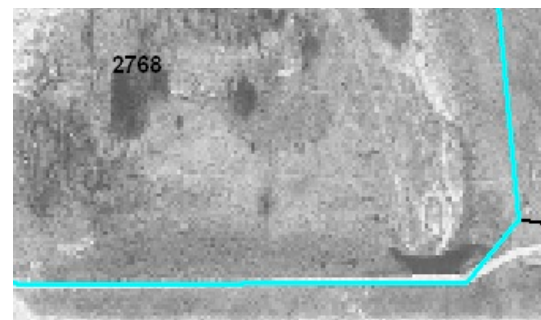
Before and After



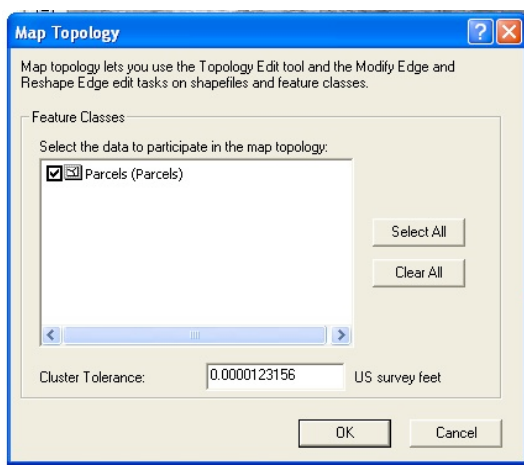
Lots 2712 and 2718 are deleted.



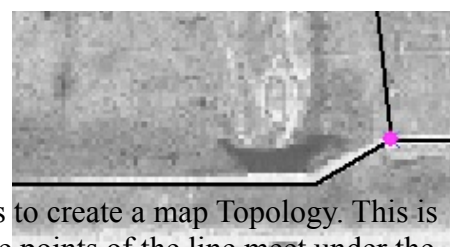
Start of the edit the blue line is the selection the green is it moving. It moves by dragging the little green dot.



The bottom line is now correctly on line with the sidewalk.



The bottom line is now correctly lined up on the sidewalk.



The last task is to create a map Topology. This is where the three points of the line meet under the little purple dot above. It is accessed by using the Map Topology dialogue box on the left.